



1. The table shows the sales of food and drink for three days at a market stall.

Day	Sales of food (£)	Sales of drink (£)
Thursday	34	16
Friday	22	48
Saturday	46	28

Hannah uses this information to draw a composite bar chart. Write down **three** different mistakes that she has made.

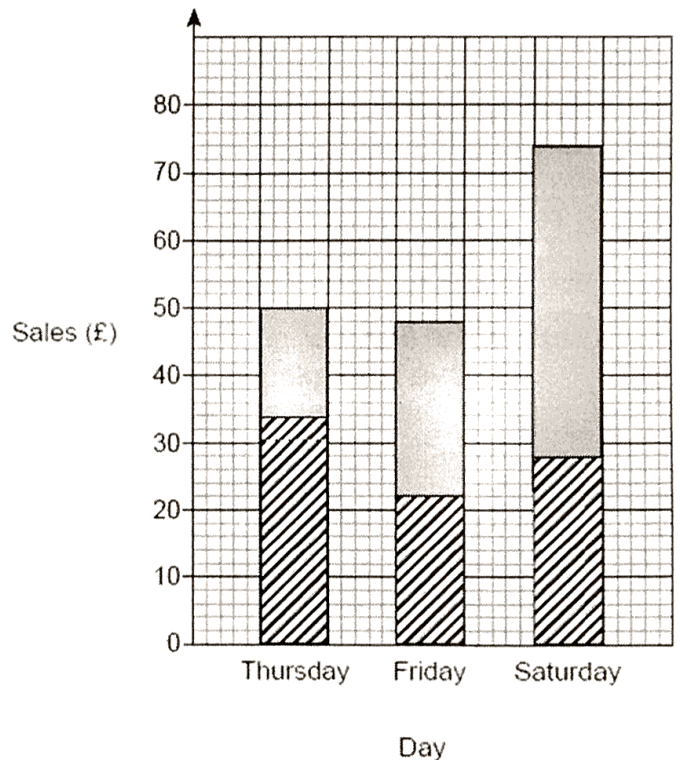
Mistake 1 ... Friday's sales of drink (£)

Mistake 2 ... Saturday's sales are mixed up.

Mistake 3 ... No key.

(Total 3 marks)

Sales of food and drink



2. Here are seven numbers.

13 6 12 7 6 4 8

(a) Work out the range of the seven numbers. Circle your answer.

5 6 7 8 9

(1)

(b) What is the mode of the seven numbers? Circle your answer.

5 6 7 8 9

(1)

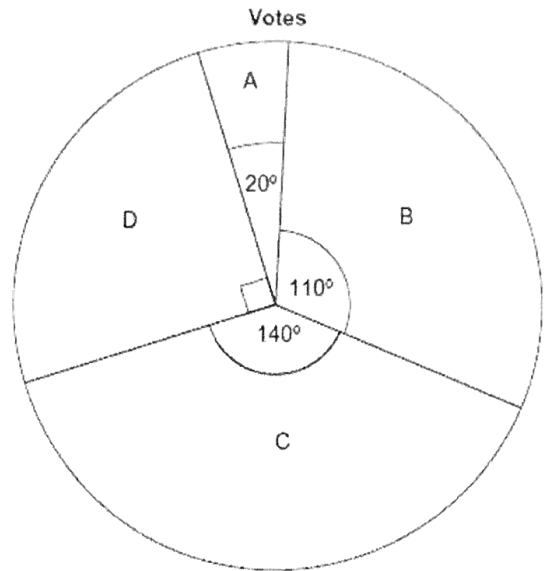
(Total 2 marks)

3. I am thinking of three positive numbers. The mode is 5. The median is 5. The range is 9. Work out the three numbers.

Answer 5 , 5 , 14

(Total 2 marks)

4. The pie chart shows information about how people voted in an election. 1800 people voted for D. How many **more** people voted for C than B?



$140^\circ - 110^\circ = 30^\circ$

$1800 \div 3 = 600$

Answer 600
(Total 3 marks)

5. Seven students have to learn some French words. The table shows the time they spent learning the words and the number of words they got wrong in a test.

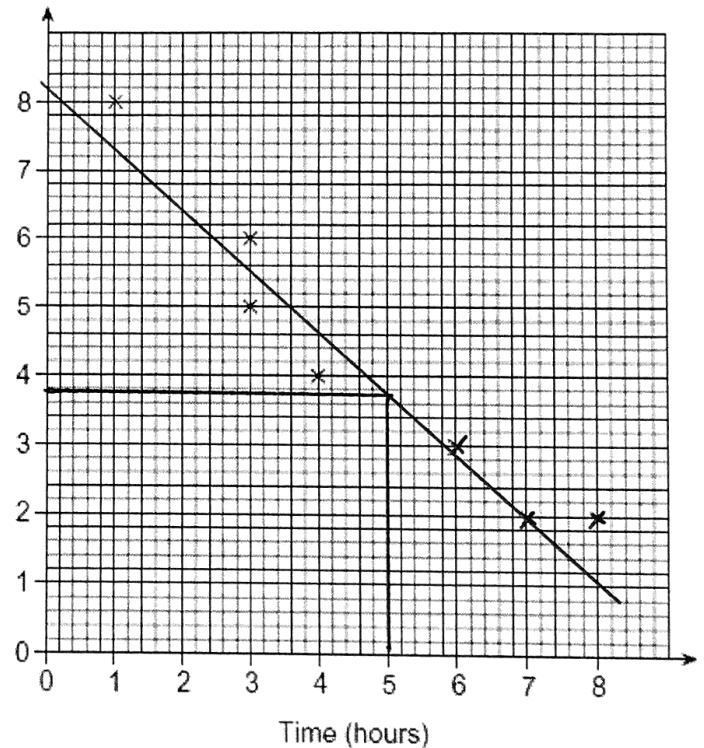
Time (hours)	1	3	3	4	6	7	8
Number of wrong words	8	6	5	4	3	2	2

- (a) The first four points have been plotted. Complete the scatter diagram. **(1)**

- (b) Describe the relationship shown by the scatter diagram.

Negative correlation

Number of wrong words



- (c) Another student spent 5 hours learning the words. Use a line of best fit to estimate the number of words he got wrong.

Answer 4 words **(2)**

- (d) Ellie has to take the test. She says, "If I learn the words for 12 hours, I will definitely not get any wrong." Is she correct? Give a reason for your answer.

We cannot tell as there is no information for this number of hours.

(1)
(Total 5 marks)

6. The table shows information about the pay per hour of 40 people.

Pay per hour, x (£)	Frequency	x	fx
$5 < x \leq 15$	14	10	140
$15 < x \leq 25$	12	20	240
$25 < x \leq 35$	11	30	330
$35 < x \leq 45$	2	40	80
$45 < x \leq 55$	1	50	50
Total = 40			840

(a) Which group contains the median pay per hour? Circle your answer.

$5 < x \leq 15$ $15 < x \leq 25$ $25 < x \leq 35$ $35 < x \leq 45$ $45 < x \leq 55$

(1)

(b) Work out an estimate of the mean pay per hour.

$840 \div 40 = 21$

.....

.....

.....

Answer £21.....

(4)

(Total 5 marks)

(Total for test = 20 marks)